

# *SOKUTEIKI*

## *Judogi measurement device*

In order to enforce the proper size and measurements of Judogi as defined by the Competition Rules and fair conditions for athletes, the IJF has approved the special measuring device SOKUTEIKI and a new procedure of Judogi control, starting from 1<sup>st</sup> January 2009. All the NFs are requested to carefully inform their athletes and coaches.

1. In all IJF events there will be a sufficient number of Sokuteiki devices available in warming-up zones for competitors to check their own Judogi before entering the contest area prior their fights.

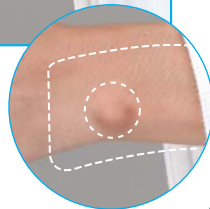
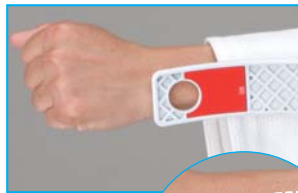
Upon entering the contest area, each competitor will be regarded as having assumed full responsibility that his / her Judogi complies fully with the Competition Rules.

2. If in doubt, a referee on the mat can check the competitors' Judogi using the Sokuteiki device. Should the Judogi not comply with the Rules, the referee, after consulting with the judges, shall penalize the competitor by Hansokumake and declare the opponent winner.

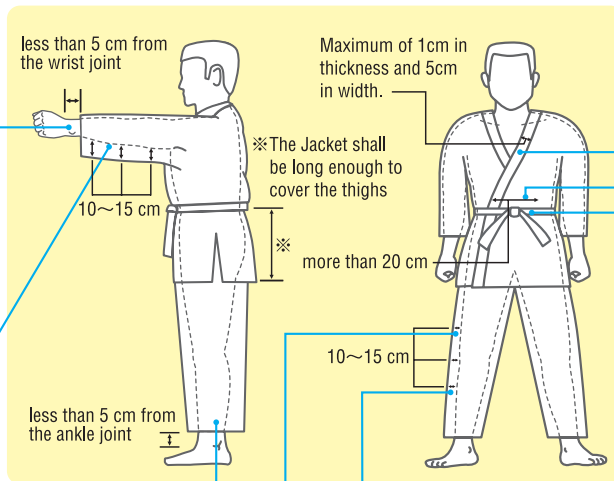


# JUDO SOKUTEIKI

## SOKUTEIKI for the Judogi control



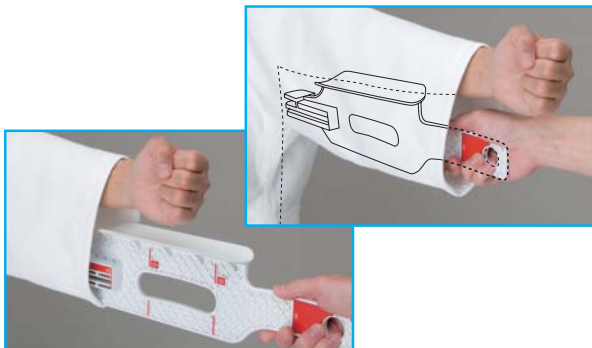
To check the length of sleeve



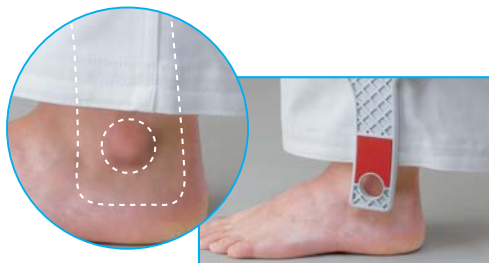
To check the width of label and its thickness



To check the width of the overlap points (more than 20cm)



To check the width of sleeve (10~15cm)



To check the length of trousers



To check the width of trousers (10~15cm)



To check the length of belt (20~30cm)

